

## GM-SCFH Stainless Steel 316 Covered Seam Friction Hinge

### Features

- Designed to hold door open without any torque adjustment
- Ideal for light weight doors, such as overhead door, glove box, electrical panel, equipment doors, etc.
- Fitted with cover for better aesthetics

### Product Performance

- Passed 10,000 cycle test (less than 20% loss of torque) and 20,000 cycles (less than 25% loss of torque)
- Passed 500 hours salt-spray test

### Material

- Stainless steel 316

### Notes

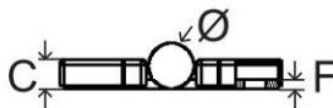
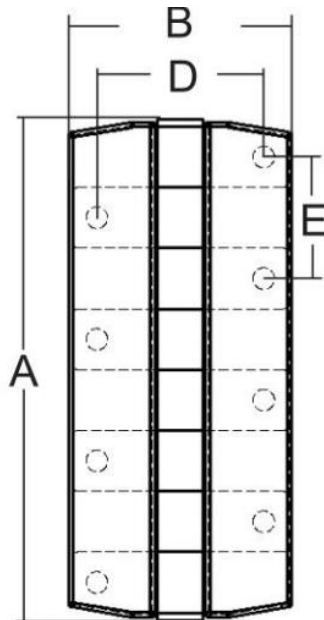
- #6 R/H fasteners are required



GM-SFCH-A419627



GM-SFCH-A419628



Part No.	A	B	C	D	E	F	Ø	Torque (per piece)
GM-SCFH-A419627	79.2	46.8	6	35	25.4	2	9.5	3.2 ± 0.6 N.m
GM-SCFH-A419628	104.6							4.3 ± 0.7 N.m